

Schola Medica Eduframe & Canvas solution

Schola Medica Case Study

Key Findings

1. **One scalable solution** with course administration & storefront (Eduframe), LMS (Canvas) and many of-the-shelf integrations
2. Get the **best user experience** for teachers, students and back-office
3. **Extendable** with custom integrations and functionalities using LTI applications
4. Drieam is the **partner from start to finish** with experienced project leaders & consultants

Started using Eduframe in

2019

The Challenge

Emergency care education plays an important role in doctors' accurate response in life threatening situations. Medical universities in the Netherlands have been outsourcing this type of education to Schola Medica for over ten years. Schola Medica ensures that healthcare staff is well prepared in case of any emergencies. Their educational programs are based on in-practice situations, using simulation patients and experienced doctors who teach 3000 students per year.

Working with short programs and relying on a continuously changing teaching staff, adds a lot of complexity to the organization. Hence, Schola Medica's main challenges were the high number and diversity of courses and teachers to plan, educational content to share with students per course and the overall participant enrollment.



The organisation had to deal with highly demanding stakeholders consisting of doctors, medical students and customers such as medical universities and hospitals. At the same time, they are striving to offer an excellent educational environment, while unburdening teachers and partners as much as possible.

During the first point of contact between Drieam and Schola Medica, the need to switch to a (blended) learning and course management system was already there. The main goal was to make a big step in improving the experience for student and teachers, while saving time in the back-office. Looking back at that period Myrddin Stoffels, Information Manager at Schola Medica, recalls:

“ At that time, we actually didn’t have any learning or registration system and were wasting a lot of time processing information and registrations manually, making use of countless Excel forms and emails. Students were given huge stacks of printed paper manuals containing all theoretical information, and so on. We recognized this was really outdated and that we definitely needed (and wanted) to improve a.s.a.p. ”

- Myrddin Stoffels, project manager

The decision

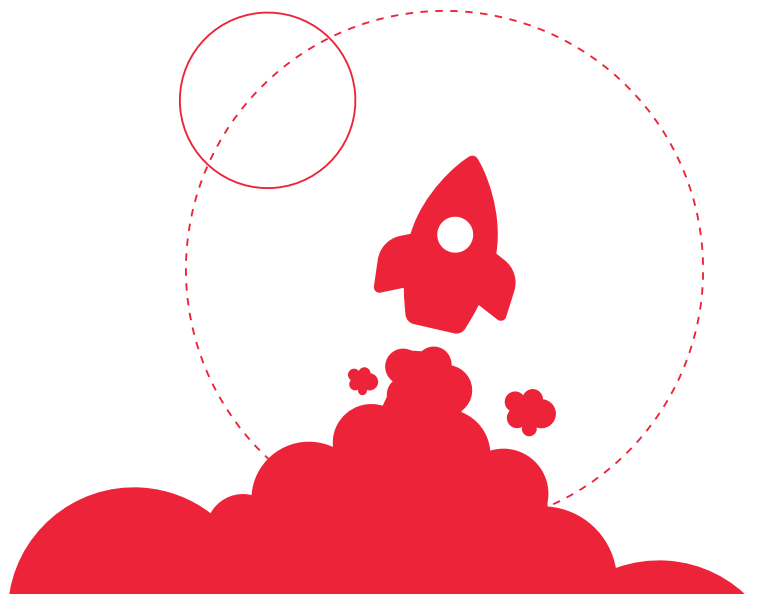
Things were up for a change when the interim CEO said *“we have to make the switch now”* and started looking for software and a partner that would help them achieve their objectives.

“When looking for potential solutions we found out that most suppliers could only offer one part of the solution”- Myrddin recalls. After extensively considering multiple options, Drieam was selected as the new partner. Next to being able to offer a complete solution covering all defined requirements and being a certified partner of Instructure (Canvas LMS), Schola Medica saw the value of Drieam as a partner in improving their digital programs in the future.



Moreover, we were pleased by the fact that during our orientation period Drieam was translating our requirements into designs, showing us the possibilities and especially making it visual. This certainly helped us to have a better understanding about our own requirements as well as challenging them.

- Myrddin Stoffels, project manager



The complete solution at Schola Medica



Website

Complete integration with existing Joomla website: courses are automatically published from Eduframe to website, and enrollments or leads via website are immediately visible in Eduframe



Eduframe

Eduframe as student information & CRM system with the functionalities as explained in this presentation.



Eduframe LTI app

Extension to improve the complex teacher planning for both teachers and back-office employees. Teacher planning is complex because the majority of teachers works as a doctor in hospitals, and only part-time for Schola Medica.



Canvas

Canvas with Schola Medica course templates, so students can prepare themselves well for a course at Schola Medica. Also, students using Canvas as a reference after the course



Canvas LTI apps

Integration between Qualtrics and Canvas to receive more information from a student after enrollment, and to do course evaluations (as part of the learning journey in Canvas, not using separate emails)

The Solution

To help Schola Medica making the next step in creating an optimal blended learning environment for their staff and students, Drieam seamlessly connected its course administration software Eduframe to the website. To solve the complexity around the planning of staff on courses in advance, Drieam extended Eduframe by developing a faculty planning tool based on the open LTI standards (a globally supported standard in educational software development).

Canvas was implemented as the foundation for Schola Medica's blended learning environment which gave them the confidence this would be a scalable solution to further develop their organisation's digital experience.

“The combination of Drieam’s proposed course administration system Eduframe with Canvas was a great advantage, as it is a known and trusted LMS by universities around the globe.”

- Myrddin Stoffels, project manager

